

Distributor for:

GRINSAFE®



DICE™ GHCP

Hazardous Location Canopy Lighting

GHCP series canopy lights feature a square design, specifically crafted for petrol pumps and gas stations. They are certified for hazardous locations, meeting Class I, Division 2, Groups A, B, C, and D standards.

Compliance

NEC/CEC Standard

UL 844 Hazardous Locations
Class I Division 2, Groups A, B, C, D
Class I, Zone 2, Group IIC

CSA C22.2 No.137-18

UL 1598 Wet Locations

UL 8750 LED Safety

IP66/67 | IK07

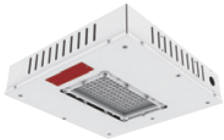
Warranty

5-year limited system warranty

Lumen Maintenance: L70 > 150,000hours @ 25°C

Modular Design

2 models with light output ranging from 9,000 lumens up to 22,500 lumens.

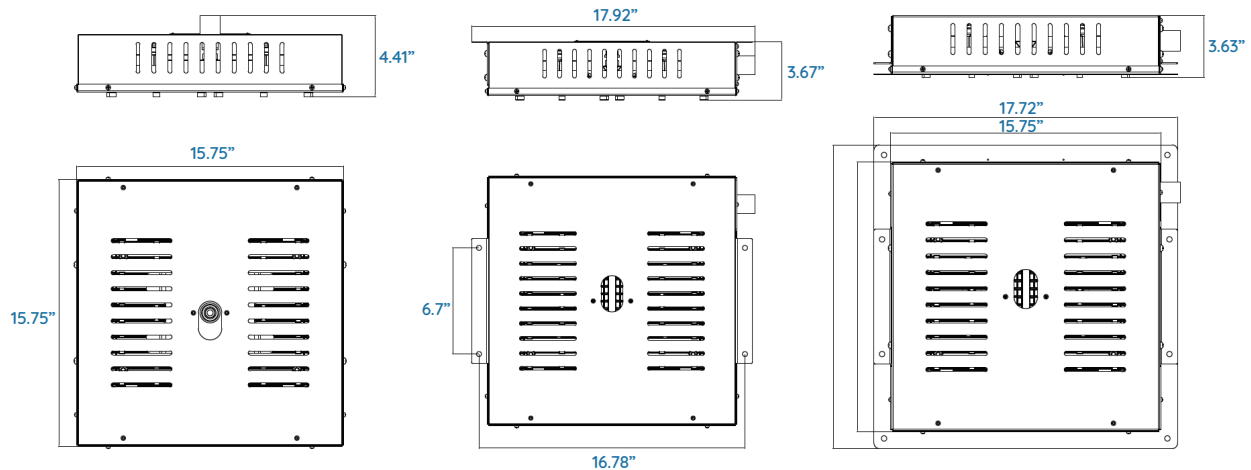


60W / 75W



120W / 150W

Dimensions



Technical Data

Electrical

Rated Power	60W / 75W / 120W / 150W
Input Voltage	100-277, 347-480V/AC
Input Frequency	50/60Hz
Power Factor	> 0.9
Driver Efficiency	≥ 90%
DC output Ripple & Noise	< 200mVP-P

Optical

Lumen Output	9,000lm ~ 22,500lm
Luminous Efficacy (Lumens per Watt)	150 lm/W
Beam Angle	60° / 90° / 110°
Correlated Color Temperature (CCT)	2700K 3000K 4000K 5000K
CRI	Ra>70

Environmental

Ambient Operating Temperature	-40°C~+50°C
Ambient Operating Humidity	10%~90% RH

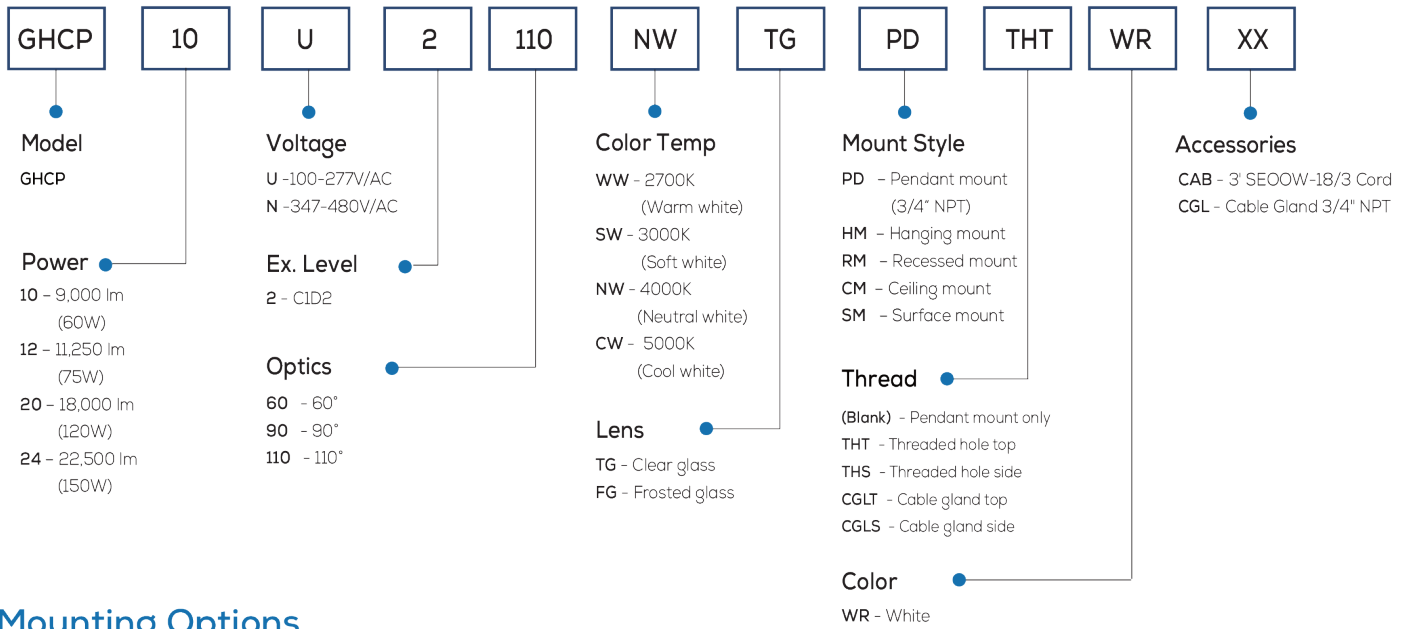
Technical

Lens Material	Clear glass
Mounting Options	Pendant / Recessed / Hanging Ceiling / Surface
Net Weight	6kg (13.2 lbs) - 60W/75W 8.5kg (18.7 lbs) - 120W/150W

Downloadable IES Files



Ordering Information and Mounting Accessories



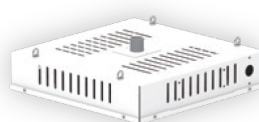
Mounting Options



PD
Pendant mount
(3/4" NPT)



RM
Recessed mount



HM
Hanging mount

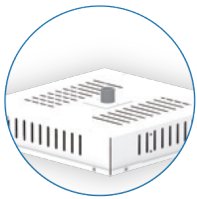


CM
Ceiling mount

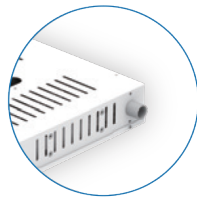


SM
Surface mount

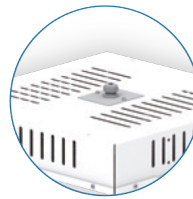
Thread



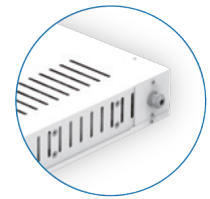
THT
Threaded hole top



THS
Threaded hole side



CGLT
Cable gland top

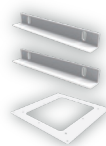


CGLS
Cable gland side

Accessories



HM
Hanging mount kit
4 pcs



RM
Recessed mount



CGL
Cable gland
3/4" NPT



CAB
3' SE00W-18/3 Cord
(Factory installed)



DICE™ GHCP Hazardous Location Canopy Lighting

Important Information

This manual contains safety information, please read carefully and follow the instruction strictly.

READ AND FOLLOW ALL SAFETY INSTRUCTIONS

All servicing should be performed by qualified personnel only.

Do not mount near any heat producing equipment. Equipment should be mounted in locations and at heights where it will not be readily subjected to tampering by unauthorized personnel.

The use of accessory equipment not recommended by the manufacturer may cause an unsafe condition. Do not use this equipment for other than intended use.

WARNING: INSTALLATION & SECONDARY RETENTION

Improper installation and handling, including secondary safety retention/securing/netting, may cause severe injury or death. We recommend that all installations should use secondary retention and/or safety netting (appropriate to the installation environment) where applicable. It is the exclusive responsibility of the contractor, installer and/or end customer to: (a) determine the suitability of the product for its intended application; and, (b) ensure that the product is installed safely (with secondary retention and/or safety netting where appropriate) and in compliance with all applicable laws and regulations. To the extent permissible under the relevant law, we disclaims all responsibility for personal injury and/or other damage resulting from any dislodgement or other dislocation of this product.

WARNING

To avoid the risks of fire, explosion, or electric shock, this product should be installed, inspected, and maintained by a qualified electrician in accordance with all applicable electrical rules and regulations.

Safety Instructions:

- Be certain, the electrical power is OFF before and during installation and maintenance.
- Make sure the supply voltage is the same as the rated luminaire voltage.
- The technical data indicated on the LED luminaires are to be observed.
- Any change on the design and modifications to the LED luminaire are not permitted.
- Observe the national/regional electrical safety rules and regulations during installation.
- LED beads are NOT replaceable. Replacement of whole set of light fixture is strongly recommended.
- All wiring connections should be capped with UL approved wire connectors.
- Luminaire MUST be well grounded.
- Any combustible materials MUST be kept away from the luminaire.
- Min 90°C supply conductors.
- Do not open the cover after installing the luminaire.

Maintenance:

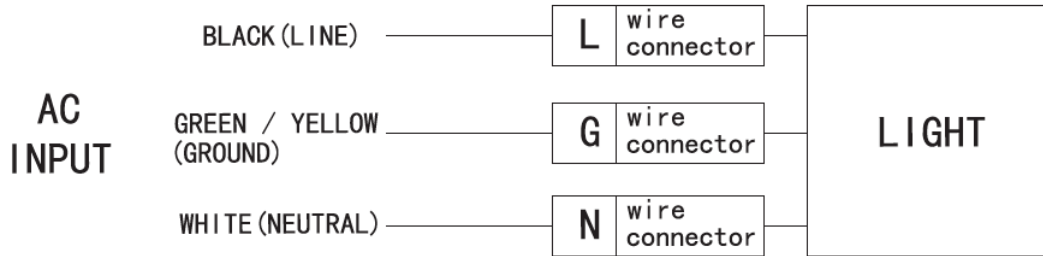
1. To avoid personal injury, before maintaining, disconnect the light first, and then wait for the luminaire temperature dropping into the safe range.
2. All parts must be checked by mechanical means to ensure they are properly assembled.
3. The external glass should be cleaned regularly to ensure continued luminaire performance. Wipe the glass with a clean, wet, non-abrasive, and lint-free cloth. If this is not sufficient, use mild soap or liquid cleaner. Do NOT use an abrasive, strong alkaline or acid detergent which might damage the luminaire.
4. Check the cooling fins of the luminaire and remove the dust or other sorts of things which accumulated on the luminaire.
5. Visual, electrical and mechanical inspections on the luminaire should be on a regular basis. We highly suggest that this routine inspection should be done at least once a year. The environment condition, where the luminaire installed, determines the frequency of inspection.
6. All electric connections MUST be checked and ensured that they are clean and firm.



Electrical Connections:

WARNING:

Cut off the electric power supply from the circuit breaker or the fuse before wiring luminaire to the circuit. The connections are marked on the wire connector or on a label and are presented figure below.

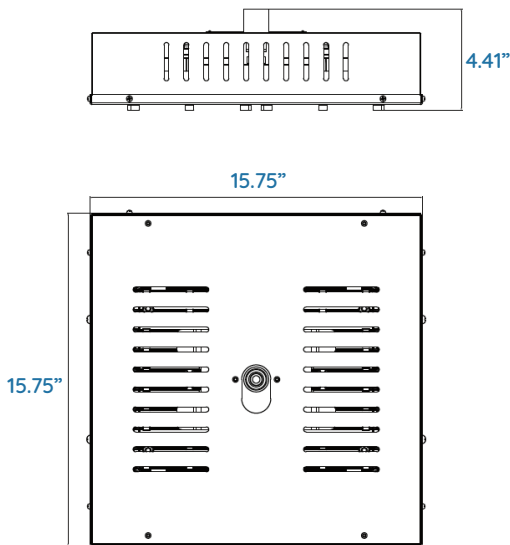


Installation & Operations:

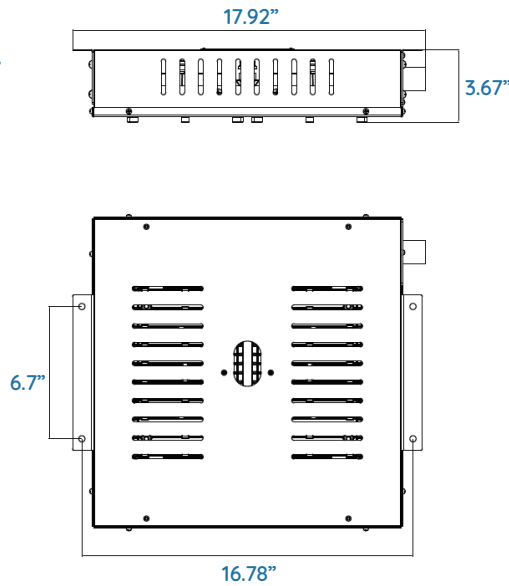
1. Connect wires.
2. Attach the Tank to the 3/4" NPT conduit.
3. Check the tightness of conduit and Tank.

Technical Diagrams:

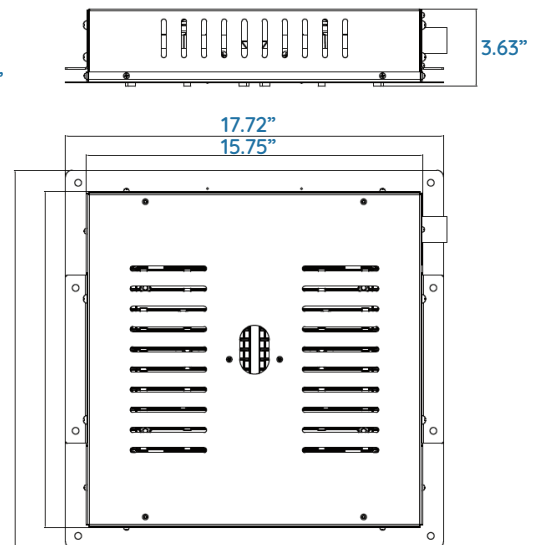
Pendant



Ceiling

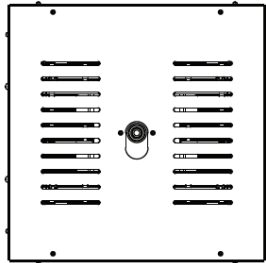
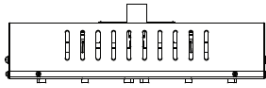


Recessed

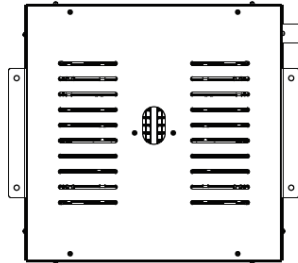
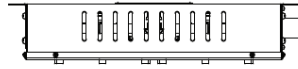


Installation:

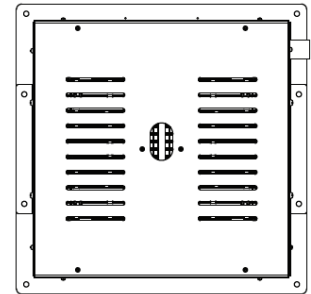
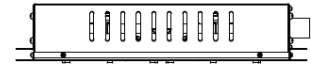
Pendant



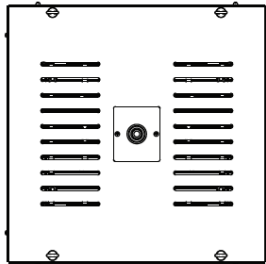
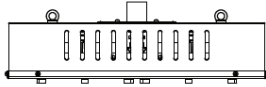
Ceiling



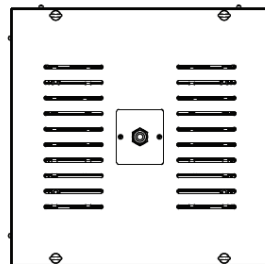
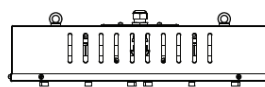
Recessed



Hang



Hang

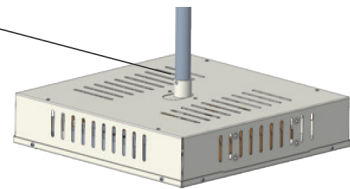
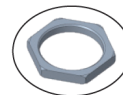


Pendant:

1. Fix the light after wiring.
2. Locking 3/4 NPT nuts.

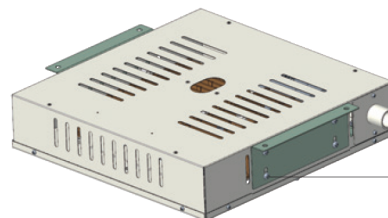
* NPT3/4 threads need to be reliably installed to ensure the waterproof performance of the Luminaire.

3/4 NPT NUTS



Ceiling:

1. Fix both side panels with M6 screw.
2. Connect wires.
3. Mount the luminaire to the ceiling with self-tapping nails.



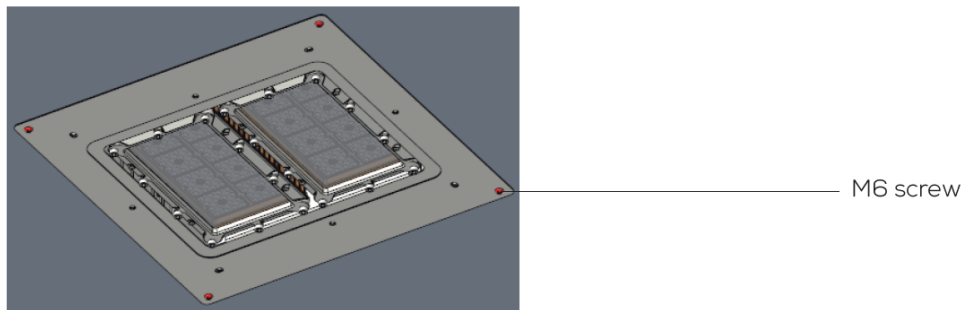
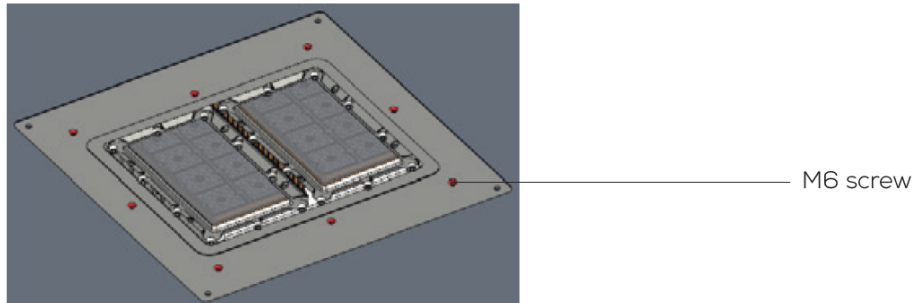
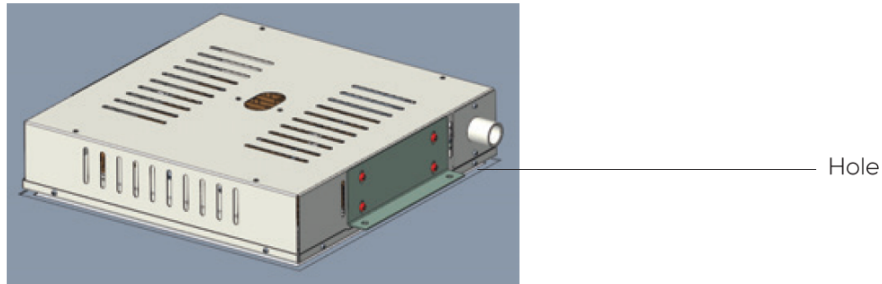
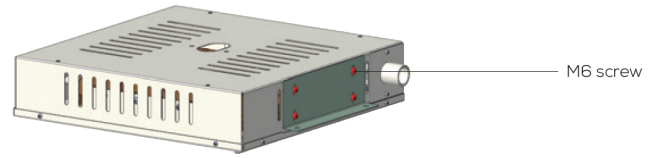
3/4 NPT

M6 screw



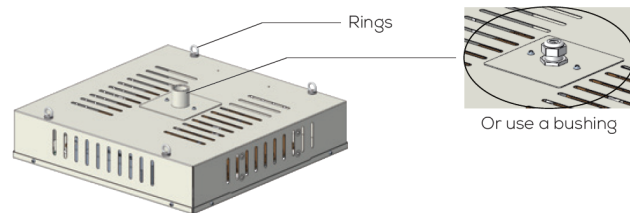
Recessed:

1. Fix both side panels with M6 screw.
2. Tilt and bring the Luminaire Main Body into the hole.
3. Place the Luminaire Main Body by horizontal onto the hole.
4. Mounting panel with M6 screw.
5. Fix the panel to the ceiling with self-tapping nails.



Chain Mount:

1. Fix the rings to the lamp.
2. Mount the luminaire with chains.
3. Connect wires to the wire connector.



Models:

Models GH; followed by CP

Models	Power	Rated voltage	Ambient Temp (ceiling mounted)	Ambient Temp (hang mounted and pendant mounted)
GHCP-10-U GHCP-10-N	60W	U:100-277V N:347-480V	-40°C (-40°F) ~ +50 °C (122 °F)	
GHCP-12-U GHCP-12-N	75W	U:100-277V N:347-480V		
GHCP-20-U GHCP-20-N	120W	U:100-277V N:347-480V	-40°C (-40°F) ~ +45 °C (113 °F)	-40°C (-40°F) ~ +50 °C (122 °F)
GHCP-24-U GHCP-24-N	150W	U:100-277V N:347-480V		

