



**ZLED**<sup>TM</sup>  
**LIGHTING**  
ZLED-LIGHTING.COM



# **OUTDOOR FIXTURES**

# LED SHOEBOX / PARKING LIGHT FIXTURE

The shoebox fixture is the most complete LED solution for high pole parking lot lighting and other outdoor lighting applications. It's contemporary, low-profile appearance satisfies the most demanding of architects and lighting designers. The fixtures also have a high-performance illumination that lasts 50,000 hours and is ideal for replacing 150-1000W metal halide, with a typical energy savings of 8%.

## Applications

Parking structures, storage areas, shopping areas, walkways, entryways, athletic facilities

## TS SERIES



### Product Features

- **Wattages:** 100W, 150W, 300W
- **Color Temps:** 50K
- **Lumens:** 130 lm/W
- **Input Voltage:** 100-277VAC
- **CRI:** >80
- **Dimming:** 0-10V
- **Rated:** IP65
- **Distribution:** Type 3
- **Mounting:** Direct mount, Slip fitter, Yoke mount
- **Warranty:** 5 years

## LS SERIES



### Product Features

- **Wattages:** 100W, 150W, 200W, 300W
- **Color Temps:** 50K (standard), 40K, 45K, 57K
- **Lumens:** 120-140 lm/W
- **Input Voltage:** 100-277VAC, 480VAC
- **CRI:** >70
- **Rated:** IP65
- **Distribution:** Type 3
- **Mounting:** Direct mount, Slip fitter, Yoke mount
- **Warranty:** 5 years

Consult website for complete specifications



# FLOOD LIGHT FIXTURES

Our flood lights deliver a broad light output to any area where high performance is essential. Available in a variety of color temperatures, you will save up to 80% in energy costs while adding superior brightness to any application. These IP65 rated fixtures are suitable for wet locations and disburse 120 degree beam optic spread.

## LED FLOOD LIGHT - CCT SELECTABLE

### Applications

Parking lots, building facades, parks, indoor and outdoor applications, and residential landscaping

### Product Features

- Wattages: 35W, 55W
- Color Temperatures: 30K, 40K, 50K selectable
- Lumens: 120 lm/W
- CRI: >80
- Dimmable: 0-10V
- Beam Angle: 110 degrees
- LED Lifespan: 50,000 hours
- Rated: UL, IP65
- Warranty: 5 years



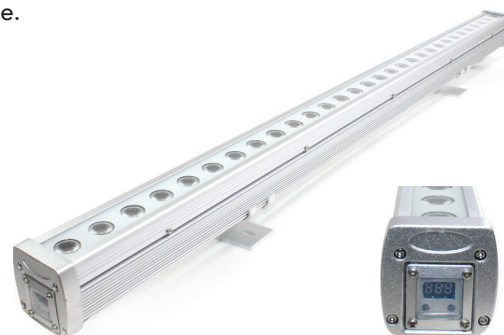
## RGB/DMX LINEAR LED WALL WASHERS

### Applications

Suitable for indoor and outdoor lighting, hotel lighting, plaza lighting, building lighting, museum lighting, landscape lighting and more.

### Product Features

- Wattages: 9W, 12W, 18W, 24W, 30W, 36W
- Color Temperatures: 30K, 40K, RGB
- Lumens: 80-100 lm/W
- Voltage Input: 96-256VAC
- LED Lifespan: 50,000 hours
- Warranty: 3 years
- Daisy chain up to 328 feet in length including the power cords.



Consult website for complete specifications

# LED WALL PACKS

Wall packs are designed as a maintenance free, energy efficient alternative to fluorescent, high pressure sodium and metal halide fixtures. They provide uniform illumination while providing a comfortable visual experience. Manufactured with a die-cast aluminum housing featuring a bronze finish and polycarbonate lens.

## Applications

Parking structures, storage areas, shopping areas, walkways, entryways, athletic facilities

## LED WALL PACK WATTAGE AND CCT SELECTABLE



### Product Features

- Wattages: 50W, 80W, 100W selectable
- Color Temps: 30K, 40K, 50K selectable
- Lumens: 125 lm/W
- Input Voltage: 120-277VAC
- CRI: >80
- Dimmable: 0-10V
- Beam Angle: 120 degrees
- LED Lifespan: 50,000 hours
- Rated: UL, IP65
- Warranty: 5 years

## LED SLIM PROFILE WALL PACK WATTAGE AND CCT SELECTABLE



### Product Features

- Wattages: **50W** - 50W, 80W, 100W selectable  
**80W** - 80W, 120W, 150W selectable
- Color Temps: 30K, 40K, 50K selectable
- Lumens: 115 lm/W
- Input Voltage: 120-277VAC
- CRI: >80
- Dimmable: 0-10V
- Beam Angle: 80 degrees
- LED Lifespan: 50,000 hours
- Rated: UL, IP65
- Warranty: 5 years

Consult website for complete specifications



# TEMPLE COLLABORATES WITH ZLEDLIGHTING FOR MORE EFFICIENT LIGHTS ON CAMPUS

The university recently replaced over 250 outdoor fixtures.

Temple University recently upgraded to new outdoor lighting on its high-rise buildings with LED fixtures manufactured by ZLEDLighting which is based in Mt. Laurel, New Jersey. ZLEDLighting replaced 1000-watt metal halide lamps in Temple's outdoor light fixtures with ZLED's 300-watt shoe box Fixture with standard mounting brackets. The new 300-watt LED fixtures represent a savings of 74%, worth approximately \$40,000 per year.



**“The success of Temple’s Climate Action Plan depends on projects like this. We need a lot more of them to reach our goals,”** said Kurt Bresser, Director of Utilities & Energy Management at Temple University.

“This project was about decreasing the university’s carbon footprint by the reduction in about 750,000 kilowatts from the national grid and reduced CO2 emissions,” said Jon Perper, founder of ZLEDLighting. “This not only provides energy savings but also the same safe and well-illuminated environment around campus!”



Due to rapid advancements in LED technology, these specifications are subject to change without notice. Please visit us online at [ZLED-Lighting.com](http://ZLED-Lighting.com) for our full product line and ordering details. Consult factory for current DLC listings and other certifications prior to submitting for rebate.